

## Simplified Wi-Fi in WatchGuard Cloud

Wireless needs have evolved to a necessity to stay connected, work, and play. Wi-Fi in WatchGuard Cloud delivers a simplified way for MSPs to centrally manage multiple security services across diverse distributed workforces that aligns with WatchGuard's mission to build a unified security platform.

### Multi-Tier and Multi-Tenant Capabilities

Reduce the complexity of managing multiple services to easily deploy, configure, and report Wi-Fi connectivity and performance for every user on one platform with Wi-Fi in WatchGuard Cloud.

### Reporting and Visibility

MSPs now have visibility into crucial reporting, such as signal strength coverage, wireless client bandwidth consumption, access point utilization, and client distribution, to always ensure a comprehensive view of your device's health and system.

### Secure Wi-Fi Experience

Our Wi-Fi 6 access points introduce Wi-Fi 6 technology and WPA3 encryption in a single wireless access point. IT teams or MSPs can distribute to end users to replace their existing wireless network to deliver a corporate and personal network that intelligently covers a comprehensive range compared to previous Wi-Fi versions.

### Enterprise-Grade Security

WatchGuard protects against cyber threats introduced by wireless networks and blocks suspicious malware, prevents intrusions, and filters harmful content to minimize the opportunity for attacks.

### Zero-Touch Delivery

Wi-Fi 6 access points enable the employee onboarding experience with easy-to-set-up devices that don't require physical assistance from corporate IT teams to install in-person.

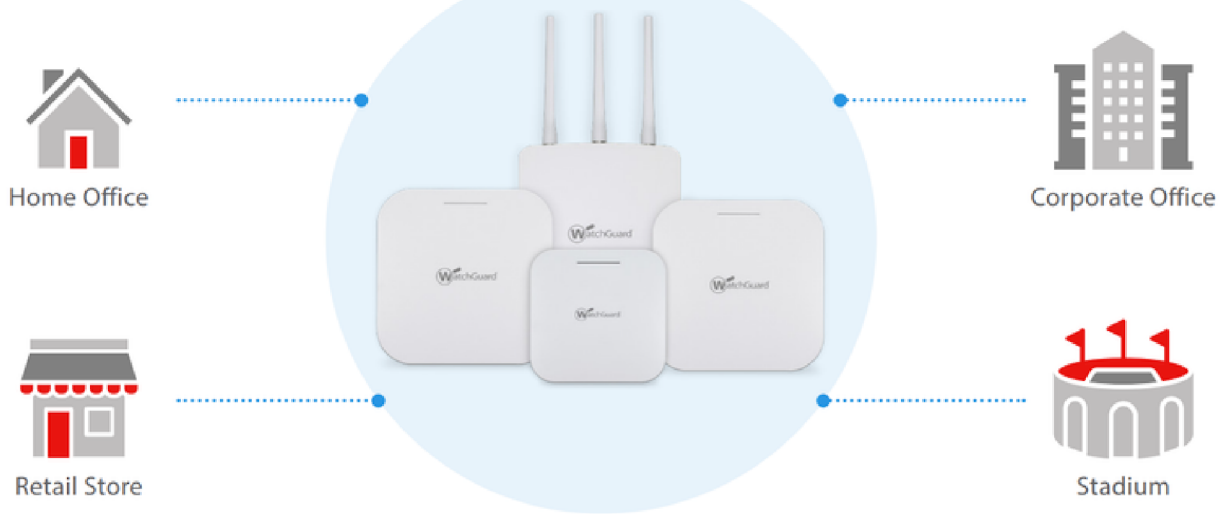
### Simplified Management with Our Unified Security Platform™

Wi-Fi in WatchGuard Cloud enables enterprise IT managers and MSPs to diagnose, monitor, and report on the performance of the ecosystem of devices connected to the corporate network in real time via a single portal to deliver a single-pane-of-glass experience. The solution is native to WatchGuard's portfolio of security products to streamline management for existing WatchGuard customers and simplify IT overhead.

*"The performance of the Wi-Fi 6 APs is lightning-fast and reliably secure. Wi-Fi 6 and WPA3 are essential for a modern network and WatchGuard has delivered an exceptional wireless experience."*

- Luis Gimenez, Director of Technology at SPW

## Wi-Fi 6 Use Case



### Small Offices and Remote Workers

- ✓ High performance Wi-Fi for employees working remotely or from home.
- ✓ Secure access to corporate data resources while working from home or at a remote office.
- ✓ Centralized Cloud management for zero-touch deployment and easy management.

### Distributed Offices and K-12 Education

- ✓ Reliable ecosystem to ensure minimal interruptions to productivity.
- ✓ Elevate multi-tasking environments that utilizes high bandwidth such as video conference calls, file sharing, research, and workshops.
- ✓ Seamless wireless experience to support a higher number of devices connecting to Wi-Fi 6 access points in comparison to Wi-Fi 5.

### IoT and Retail

- ✓ Wi-Fi 6 is the superior option for IoT connectivity to serve power-hungry devices with large batteries, mobile devices, autonomous equipment, and more.
- ✓ Appointment check-ins, surveying tools, targeted promotions, and push notifications can be delivered without interrupting the wireless experience
- ✓ Maximized performance to support point-of-sales systems to distributed retail shops to minimize power consumption and congestion.
- ✓ Scale up digitalization of businesses with secure WPA3 integration.
- ✓ Deliver custom-branded user experiences with the captive portal to guest users before they are granted access to the Wi-Fi network.

### Rugged and High-Density Deployments

- ✓ High-performance wireless access points are ideal for high-density environments to deliver a seamless wireless experience, no matter the conditions.
- ✓ AP430CR is an IP67-rated enclosure with an operating temperature -40 to 149°F (-40 to 65°C) allowing for deployment to the most extreme weather conditions.
- ✓ Various outdoor and rugged high-density environments include manufacturing warehouses, industrial freezers, expansive corporate or educational campuses, and everything in between.
- ✓ Less common use cases that WatchGuard's Wi-Fi access points currently support that are in this category include campgrounds, parking garages, and playfields.

## Flexible Management Options for Wi-Fi 6 Access Points in WatchGuard Cloud

### Wi-Fi with WatchGuard - We've got you covered!

From indoor remote workspaces or a small office to rugged, expansive outdoor environments – WatchGuard has a range of Wi-Fi 6 access points to fit every wireless need. WatchGuard's Wi-Fi management license options enable capabilities that support the business needs being faced today and offer the flexibility to evolve alongside the wireless needs of tomorrow.



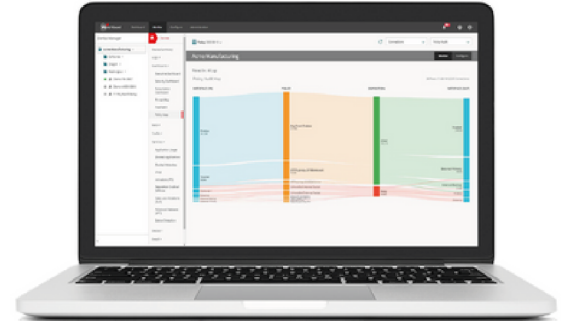
MANAGEMENT LICENSE OPTIONS		
FEATURE DESCRIPTION	STANDARD WI-FI	UNIFIED SECURITY PLATFORM™ WI-FI
Native WatchGuard Cloud Management Features	✓	✓
24/7 Support and Hardware Warranty	✓	✓
Inventory Management	✓	✓
SSH/CLI Access	✓	✓
Configuration of Radio Settings	✓	✓
Configuration of SSID	✓	✓
Configuration of Device Settings	✓	✓
Firmware Updated	✓	✓
24-Hour Reporting/Visibility	✓	✓
Live Status Visibility	✓	✓
WatchGuard Cloud API Integration for PSA	✓	✓
AP Site Templating	✓	✓
Captive Portal	✓	✓
Syslog Server Output	✓	✓
IKEv2 VPN Features (RAP)		✓
30-Day Reporting/Visibility		✓
Future WatchGuard Portfolio Integrations		✓
Future Security and Wi-Fi Features*		✓

\* Features included in the Unified Security Platform license will be determined by WatchGuard. Some features may require additional products from WatchGuard to work.



## WatchGuard Cloud

- Connect in real time to deploy tasks to thousands of devices in seconds
- Manage all WatchGuard-branded products from a single console
- View devices across endpoint platforms including Windows, Linux, macOS, iOS and Android



## THE WATCHGUARD PORTFOLIO



### Network Security

WatchGuard Network Security solutions are designed from the ground up to be easy to deploy, use, and manage – in addition to providing the strongest security possible. Our unique approach to network security focuses on bringing best-in-class, enterprise-grade security to any organization, regardless of size or technical expertise.



### Multi-Factor Authentication

WatchGuard AuthPoint® is the right solution to address the password driven security gap with multi-factor authentication on an easy-to-use Cloud platform. WatchGuard's unique approach adds the "mobile phone DNA" as an identifying factor to ensure that only the correct individual is granted access to sensitive networks and Cloud applications.



### Secure Cloud Wi-Fi

WatchGuard's Secure Wi-Fi Solution, a true game-changer in today's market, is engineered to provide a safe, protected airspace for Wi-Fi environments, while eliminating administrative headaches and greatly reducing costs. With expansive engagement tools and visibility into business analytics, it delivers the competitive advantage businesses need to succeed.



### Endpoint Security

WatchGuard Network Security solutions are designed from the ground up to be easy to deploy, use, and manage – in addition to providing the strongest security possible. Our unique approach to network security focuses on bringing best-in-class, enterprise-grade security to any organization, regardless of size or technical expertise.

### Find out more

For additional details, talk to OX IT Solutions. We're an authorised WatchGuard Gold partner.

[www.oxitsolutions.co.uk](http://www.oxitsolutions.co.uk)

01865 594930

[sales@oxitsolutions.co.uk](mailto:sales@oxitsolutions.co.uk)

### About WatchGuard

WatchGuard® Technologies, Inc. is a global leader in network security, endpoint security, secure Wi-Fi, multi-factor authentication, and network intelligence. The company's award-winning products and services are trusted around the world by over 18,000 security resellers and service providers to protect more than 250,000 customers. WatchGuard's mission is to make enterprise-grade security accessible to companies of all types and sizes through simplicity, making WatchGuard an ideal solution for midmarket businesses and distributed enterprises. The company is headquartered in Seattle, Washington, with offices throughout North America, Europe, Pacific, and Latin America. To learn more, visit WatchGuard.com.